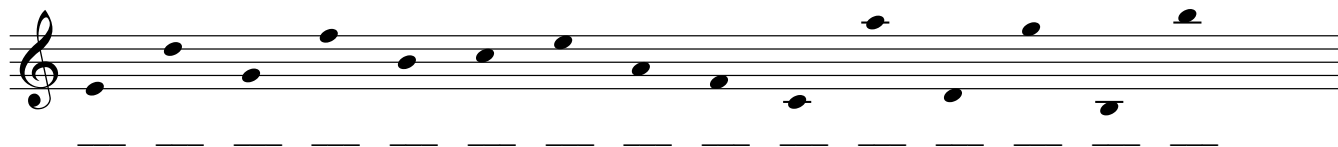


Quiz 1

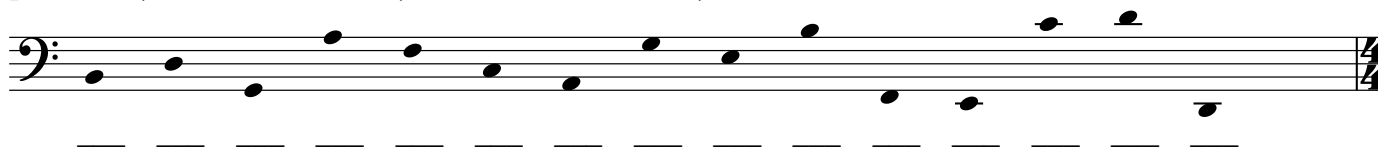
Name an enharmonic spelling for each note (you **may** have to use a double sharp or flat):

(5 points) 1) E ___ 2) Db ___ 3) C ___ 4) G# ___ 5) A ___

(15 points) 6) Name the notes (A, B, C, D, E, F or G):



(15 points) 7) Name the notes (A, B, C, D, E, F or G):



(5 points)

Write whether the distance between the two notes is a Whole (W), Half (H) or Neither (N)

8) Eb to F ___ 9) Bb to A ___ 10) G# to Gb 11) D to B# ___ 12) E to Fb ___

(10 points) 13) Rewrite the following rhythm with correct beaming



(10 points) 14) Rewrite the following rhythm with correct beaming



(10 points)

Write if the time signature is simple/compound, and duple/triple/quadruple (example: triple compound)

- 15) $\frac{6}{8}$ _____ 16) $\frac{3}{4}$ _____ 17) $\frac{4}{4}$ _____ 18) $\frac{12}{8}$ _____ 19) $\frac{9}{8}$ _____

(10 points)

Name the Major key signatures:

20) _____ 21) _____ 22) _____ 23) _____ 24) _____

25) _____ 26) _____ 27) _____ 28) _____ 29) _____

(15 points)

30) Label the following in solfeggio (do, re, mi, fa, sol, la, or ti)

(5 points)

Write the key signatures for the following on treble and bass clefs:

31) E

32) Eb